

## DATA SHEET

PDS4-K LED extrusion – article number B3776

### Product characteristics

The recessed extrusion is made from high quality, double-anodized aluminum designed for flexible or rigid LED strips that are 8 - 10mm wide. One of the accessories offered for the extrusion are covers that shade and protect LEDs inside the profile. There are a few types of covers: cover K, KA-BIS, HS (frosted or transparent), LIGER (frosted matte) or clear focusing cover- S, thanks to which we obtain a 10 degree light beam angle. Covers are made of polycarbonate, and additionally, HS covers are certified for excellent resistance to all weather conditions, UV radiation as well as being flame retardant.

Standard polypropylene end caps are used for the extrusion as supplementary accessories. End caps protect the extrusion from dust and other undesirable elements, which can make LED strips dirty and consequently deteriorate the lighting parameters.

The extrusion is mounted into specially prepared grooves with a use of double-sided tape or mounting glue. Integrated, straight line of light can be achieved by assembling the extrusion, densely spaced LEDs and frosted HS (minimum 140 LED per meter) cover or frosted matte LIGER (minimum 120 LED per meter) cover. LED fixture can also be assembled to be waterproof and has its ingress protection rating (describes the protection against the ingress of solids, dust and water) equal IP 67.

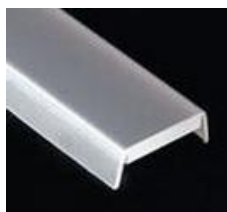
### Applications

The extrusion with LED light source is mostly used as interior lighting, especially to light cabinets, stairs, glass-cases, or as a decoration light for a niche in drywall ceilings. IP 67 version can be also used as an outdoor lighting for elevations or architectural elements of gardens.

### Products related to the Extrusion



cover type K/KA-BIS  
frosted (1547/17071)  
transp. (1548/17072)  
cover type LIGER  
frosted matte (17031)



cover type HS  
frosted (1369)  
transparent (1370)



cover type S  
transparent (00220)



end cap  
without hole (1438)  
with hole (1447)

### Technical specification

Ingress Protection Rating

IP 20 (standard), IP 67 (optional)

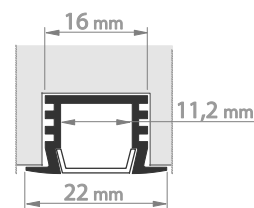
Available lengths

1 m / 2 m / 3 m\* (can be cut to any size)

\*available by arrangement with the sales department of KLUŚ

Material

body – aluminum, cover – polycarbonate (PC), end cap – polypropylene (PP)



[www.KlusDesign.eu](http://www.KlusDesign.eu)

\* Uprzejmie informujemy o zastrzeżeniu sobie prawa do zmian asortymentowych i modyfikacji produktów.  
We reserve the right to change and modify our products.

**KLUŚ**